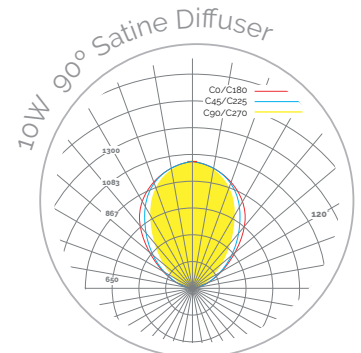
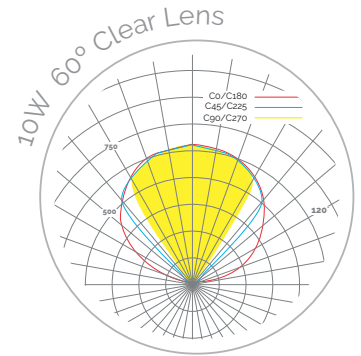
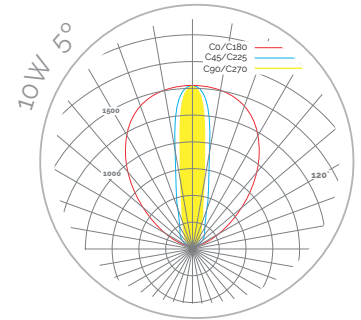


L100

LumiLine Low Profile
Efficient LED Luminaire



The classic LumiLine Luminaire, offering three beam angles and four mounting options within the low profile housing.



FEATURES

- 9 Watts per foot provides up to 410 lumens per foot at 45 lumens per Watt efficacy
- Remote drivers offer allow the fixture to fit into small spaces
- Low profile design is 1 $\frac{1}{4}$ " W x 1 $\frac{3}{16}$ " H while ranging in lengths up to 96"
- Fixtures can be wired in series up to 12'

L100

ORDERING

L100							
PRODUCT	POWER	LENGTH	LED COLOR	CONTROL	OPTICS	MOUNTING	ACCESSORIES
L100 LumiLine Low Profile Versatile Mount Efficient LED Luminaire	G3 9 watts /linear ft	12 12" actual	W3 3000K White	ND Non-Dim D 1%, 0-10V Dim S Lutron ECO 1% Soft On Fade to Black PEQ1 L Lutron Hi-Lumi 1% EcoSystem Digital L3DAE DL Lutron Hi-Lume 1% 3-Wire L3DA3W T Lutron Hi-Lumi 1% 120V 2-Wire LTEA2W	05 5° lens 60 60° clear lens 90 90° lens with satine diffuser (92% Transm.)	HV Horizontal & Vertical Mounting Clips Q Quick Release Mount S Swivel Mount	SPECIFY QUANTITIES L100-BL-B External Blade Louver in Matte Black
		24 23 ⁷ / ₈ " actual					W35 3500K White
		36 35 ³ / ₄ " actual	W4 4000K White		LFC-L100-32 32" jumper cable for extended end to end feeds		
		48 47 ¹ / ₂ " actual					
		60 59 ³ / ₈ " actual					
		72 71 ¹ / ₈ " actual					
		84 83" actual					
		96 94 ³ / ₄ " actual					

CONSTRUCTION

- Extruded aluminum housing with satin anodized finish
- Proprietary optics are UV stable and optimized for transmission
- Numerous stainless steel and aluminum mounting solutions

LENGTHS AND MOUNTING

- Standard lengths from 12" to 94³/₄"
- Choice of mounting options: horizontal, vertical, swivel, or quick release mount

OPTIONS

- Optional external blade louver available in matte black finish

LEDS

- High flux LEDs in 3000K, 3500K, and 4000K

COMPLIANCE

- ETL listed for dry locations. CSA and RoHS compliant
- LM79 tested, LM70 (50,000 hours) TM21.

PERFORMANCE

- Standard Power – 9 W/ft
 - 5° Blade Louver – 320 lm/ft; 35 lm/W
 - 60° Clear – 354 lm/ft; 40 lm/W
 - 90° Frosted – 406 lm/ft; 45 lm/W
- Average rated LED life of 50,000 hours @ 70% lumen output*
- IES LM-79 files can be downloaded at ElectrixIllumination.com

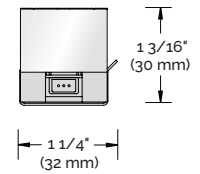
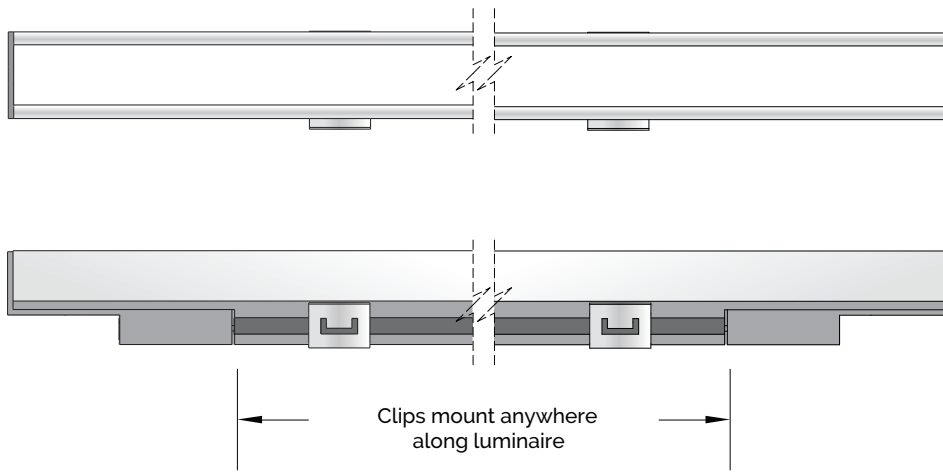
* To ensure proper performance, ambient temperature around luminaire should not exceed 120F. Architectural details should include ventilation around fixture.

ELECTRICAL

- Dimmable, high flux LEDs available in 3000K through 4000K
- Solid state low voltage luminaires powered with 24V DC
- Fixtures can be wired in series up to 12'
- Electronic power supplies can be mounted up to 32' from fixture with Non-dimming or 0-10V drivers. Consult factory for mounting distances of Lutron Drivers

WARRANTY

- 3-year limited warranty. Complete warranty terms available at ElectrixIllumination.com



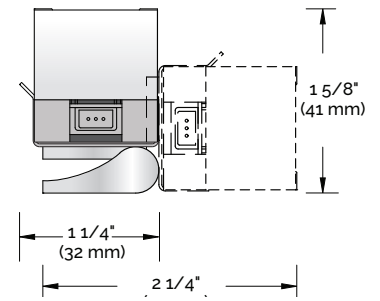
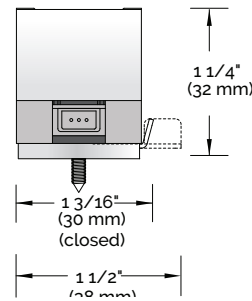
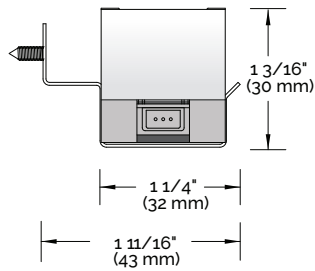
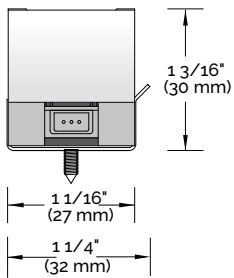
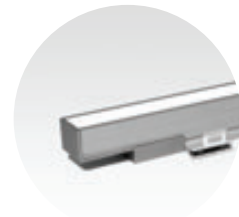
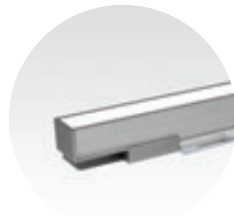
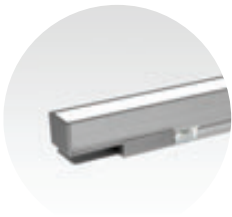
MOUNTING OPTIONS

HORIZONTAL

VERTICAL

QUICK RELEASE

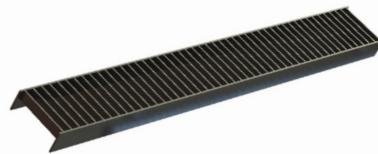
SWIVEL



CABLES AND ACCESSORIES

EXTERNAL BLADE LOUVER

L100-BL-B External Blade Louver in Matte Black



JUMPER CABLES

JC-L100-COILED Coiled jumper cable

LFC-L100-32 32" jumper cable for extended end to end feeds



LED POWER SUPPLIES

DRY LOCATION

(Power supplies to be ordered separately)

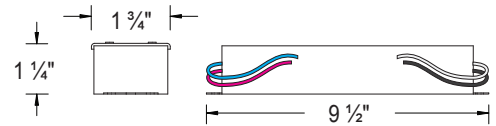
96W MAX POWER SUPPLY

MODELS:

PS96 96 Watt Dry Location Driver

PS96D 96 Watt Dry Location Driver with Dimming Capabilities

- Output lead: 1W (min) to 96W (max)
- Input voltage: 120V-277V AC output voltage: 24V DC
- Maximum remote driver distance is 32'.⁴
- Drivers supplied with 6" input/output leads
- 0-10V dimming with PS96D power supply
- Dimming driver requires a 0-10V control interface (by others)⁵
- Enclosure available - consult factory



MODEL: PS96/PS96D

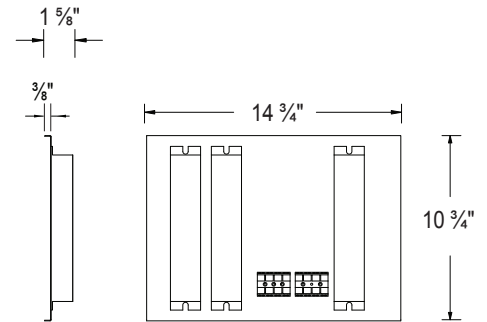
288W MAX POWER SUPPLY

MODELS:

PS288 288 Watt Dry Location Driver

PS288D 288 Watt Dry Location Driver with Dimming Capabilities

- Output lead: three(3) 96W channels
- Input voltage: 120V-277V AC output voltage: 24V DC
- Maximum remote driver distance is 32'.⁴
- 0-10V dimming with PS288D power supply
- Dimming driver requires a 0-10V control interface (by others)⁵
- Enclosure available - consult factory



MODEL: PS288/PS288D

⁴ The remote mounting distance may be exceeded. However, precaution for site condition of electromagnetic interference (EMI) and voltage drop must be considered.

⁵ Contact the factory for dimming wire diagram