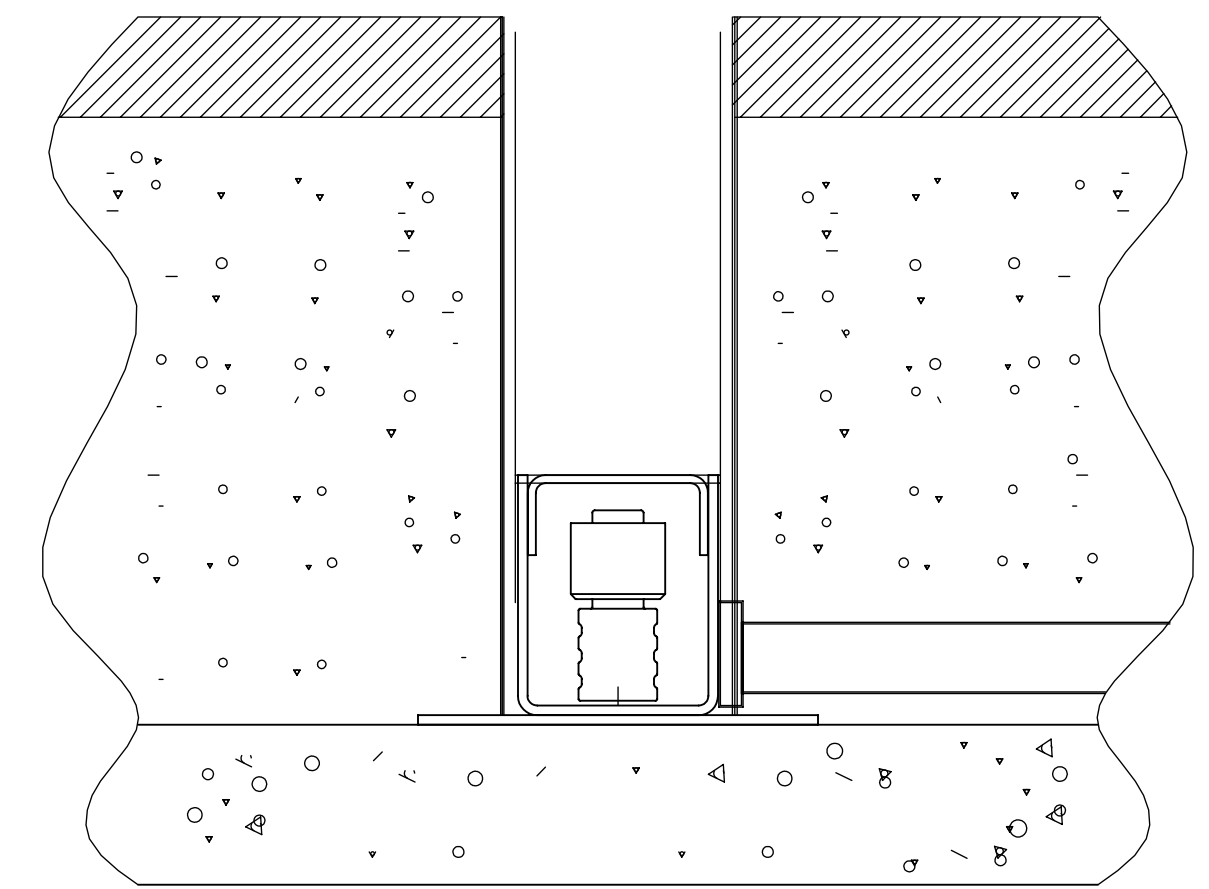
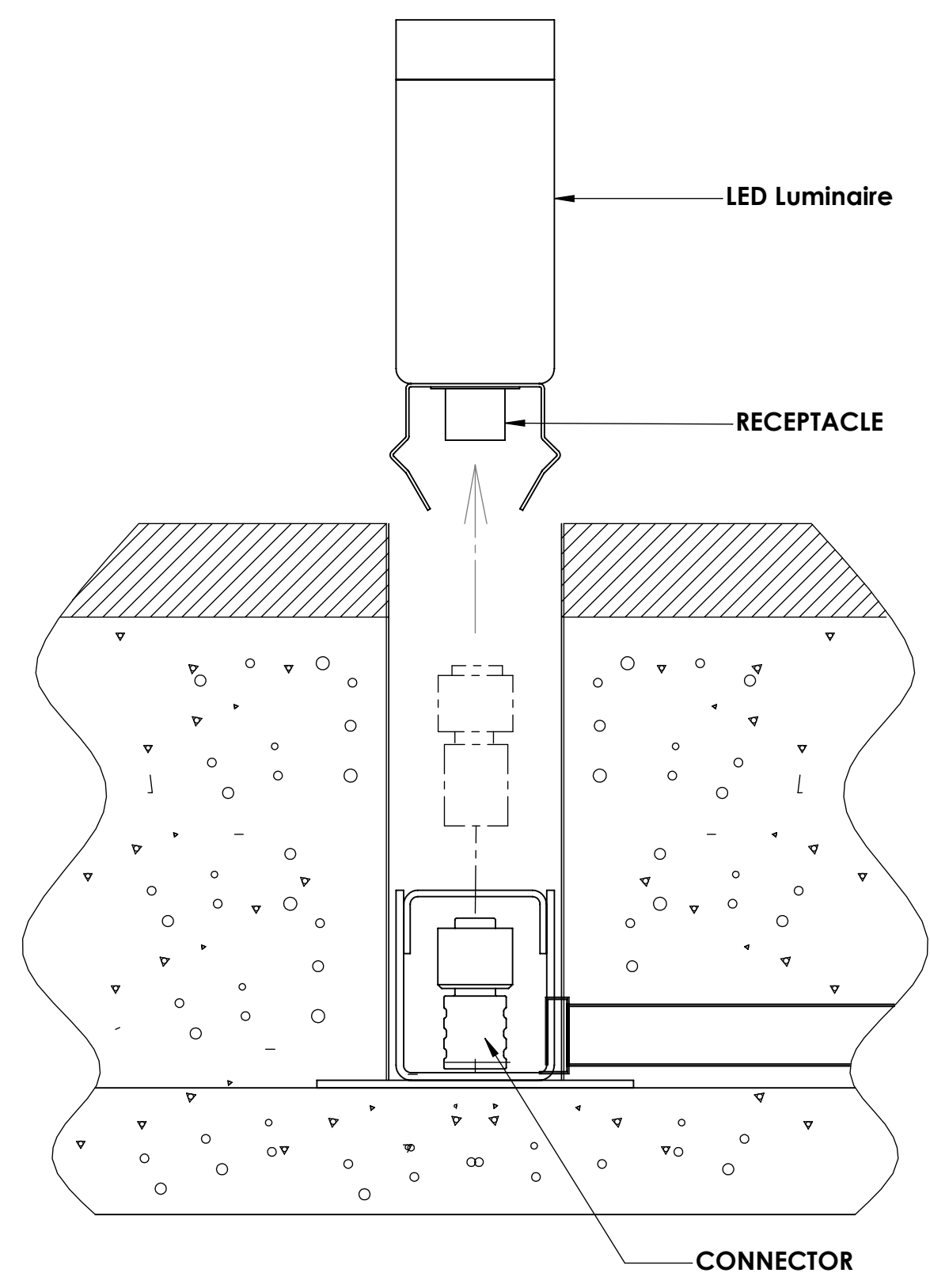


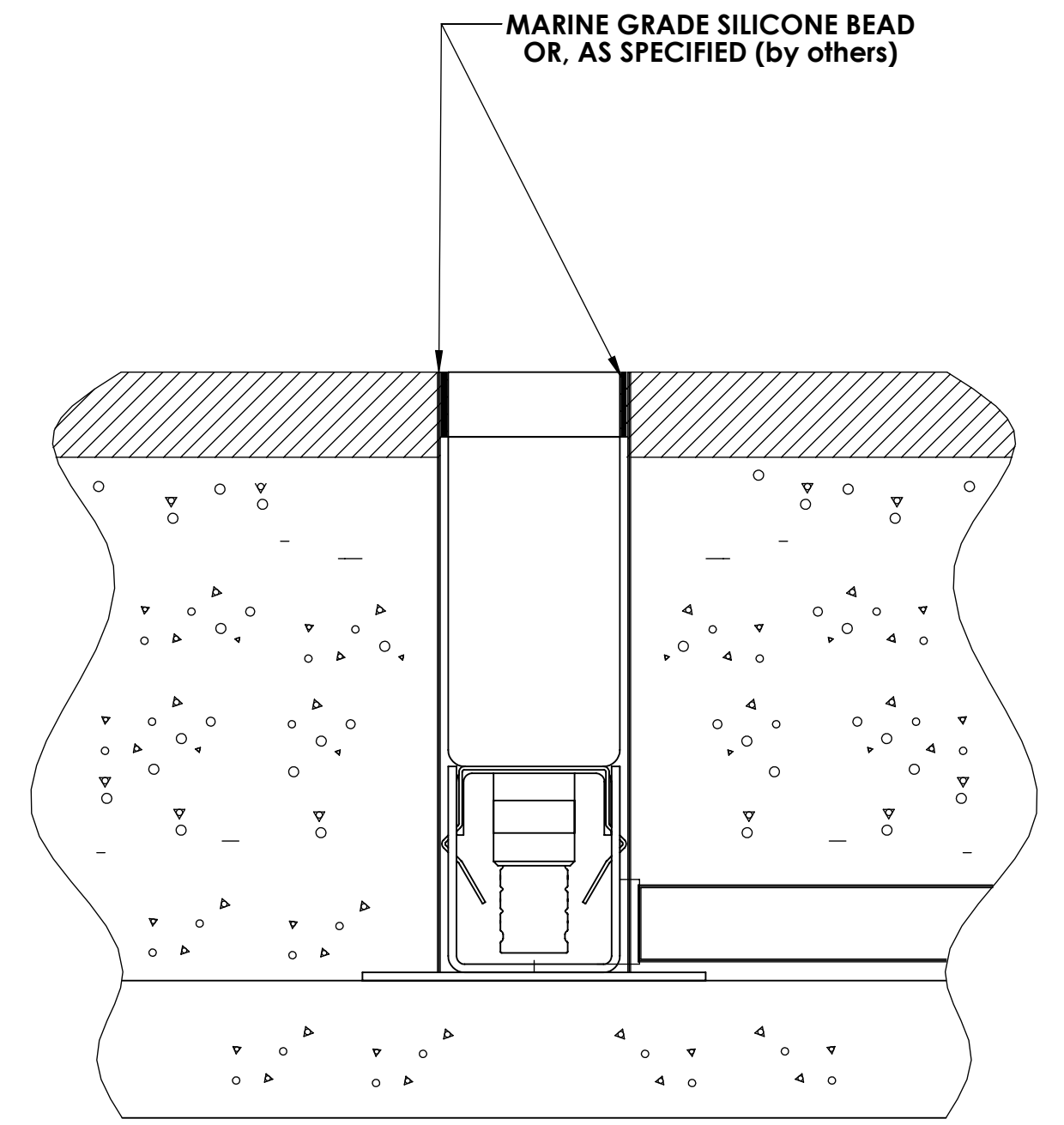
1. Install the recessed frame on the prepared sub grade. Install the power supply cable and feed to the remote driver per local and NEC code.



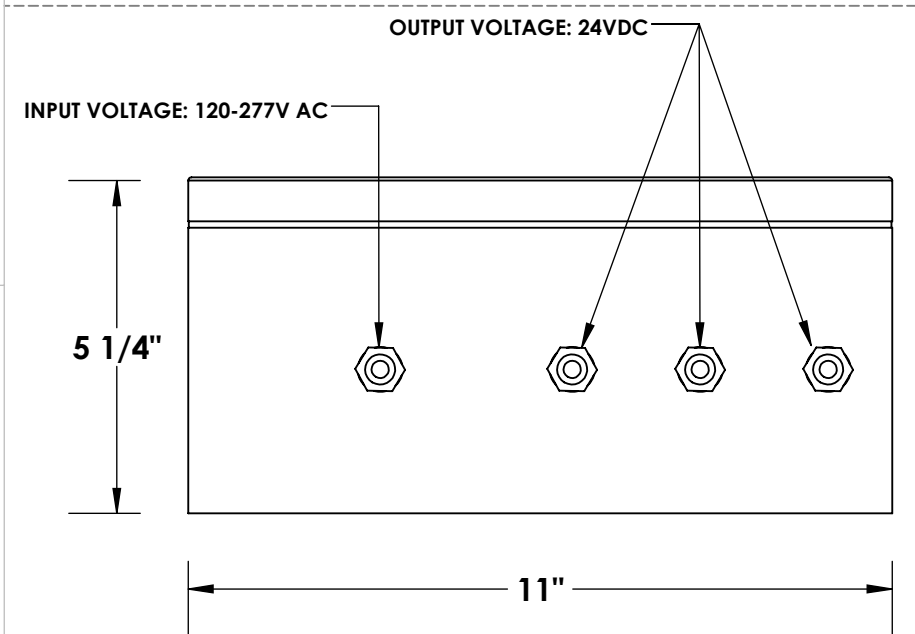
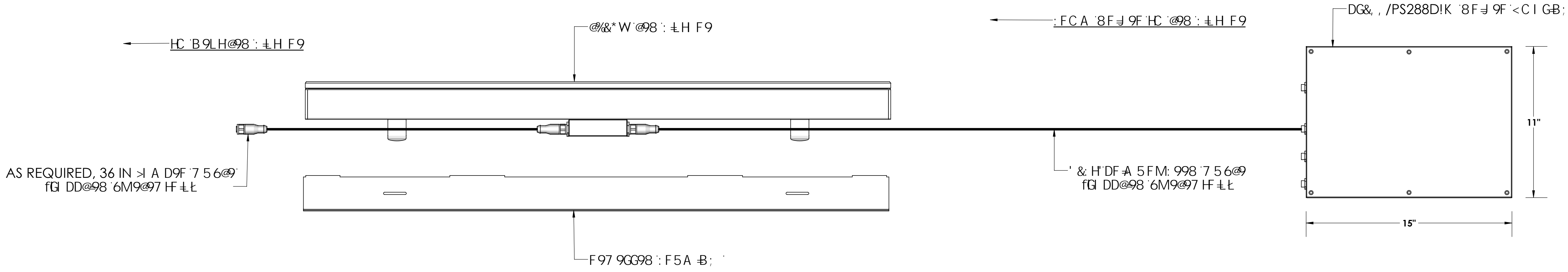
2. Lay the foundation and finished grade per architectural specifications (by others).



3. Grease the IP68 connector threads and securely mate the male/female receptacles.



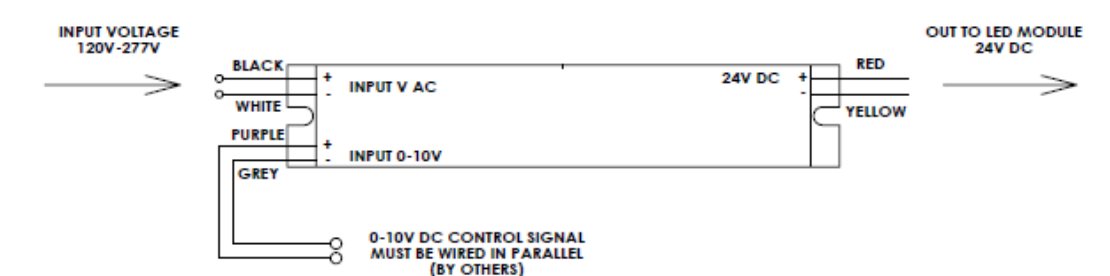
4. Install the LED Luminaire into the recessed frame and finish the fixture edge as specified by architect.



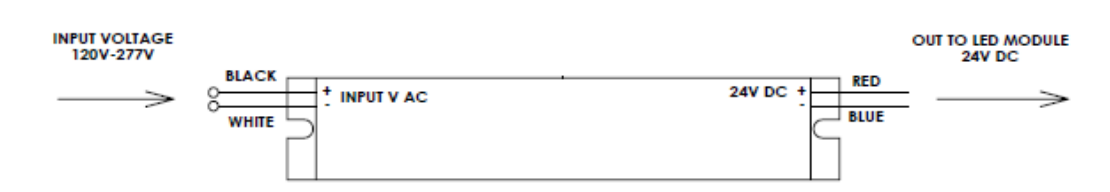
PS288-W MAX POWER SUPPLY:  
 • OUTPUT LEAD : THREE (3) 96W CHANNELS  
 • INPUT VOLTAGE : 120V-277V AC  
 • OUTPUT VOLTAGE : 24V DC

NOTES:  
 1. FACTORY SUPPLIED FEED CABLES AND EACH FEED CABLE ARE SUPPLIED WITH REQUIRED FACTORY SIZED CABLE GLAND  
 2. ALL REQUIRED FEED HOLES WILL BE DRILLED IN THE FIELD AND SEALED TO PREVENT WATER INTRUSION BY OTHERS.

TYPICAL WIRE SCHEMATICS: 96W POWER SUPPLY (DIMMABLE)



TYPICAL WIRE SCHEMATICS: 96W POWER SUPPLY (NON DIMMABLE)



**SAFETY WARNING:**  
 THE INSTALLER IS RESPONSIBLE FOR PROPER INSTALLATION. THESE FIXTURES MUST BE INSTALLED BY A LICENSED ELECTRICIAN IN ACCORDANCE WITH THE NATIONAL ELECTRIC CODE AND RELEVANT LOCAL CODES.



PROPRIETARY AND CONFIDENTIAL

B9LHSDM	1.098 CB	B-G:	F9J
500W5HC-B		DO NOT SCALE DRAWING	

L126W TYPICAL INSTALLATION INSTRUCTION

GA9 BK : "BC"  
 D G7 5 @ 9 . ) . \* K 9# < H  
 G-99HFC : %