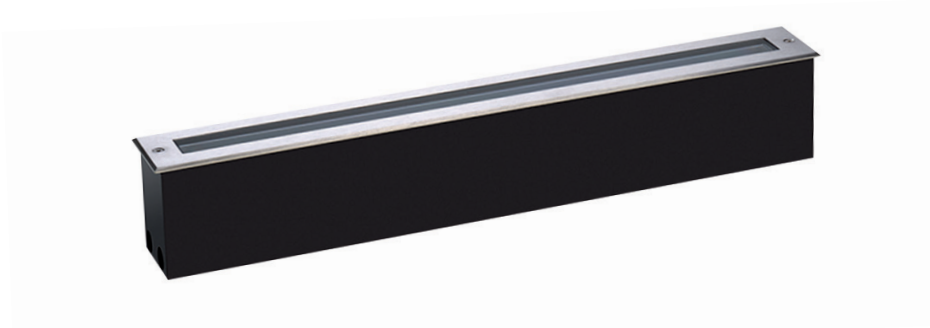


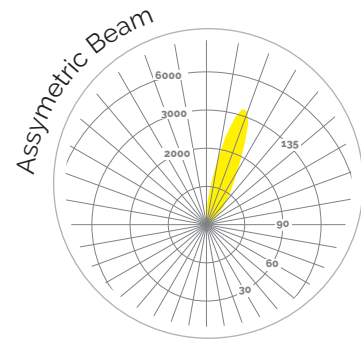
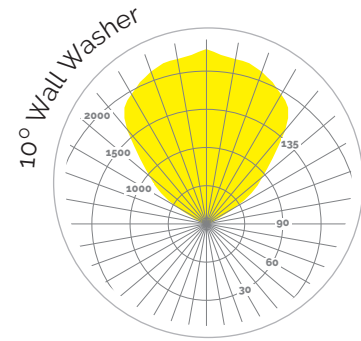
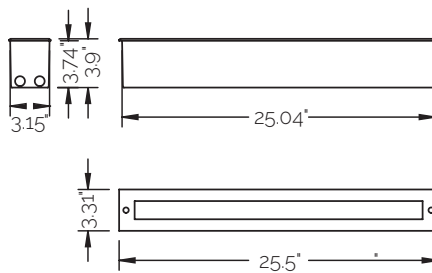


Upline 600

Linear In-Ground LED Luminaire



Versatile and slim linear in-ground uplighter for facade illumination



FEATURES

- Luminaires available with wall wash or asymmetric optics
- Wall wash optics create a continuous line of light with minimal shadow between luminaires.
- 6 x 2.5W high performance LEDs
- Integral Driver
- Up to 760 Lumens
- 50 Lumens / Watt
- IP67 & IK10 Rated

MUL-600

ORDERING

MUL600 - 15 - - B -

PRODUCT	POWER	LED COLOR	OPTICS	FINISH	MOUNTING
MEYER Upline 600 Linear In-grade LED Uplighter	15 6 x 2.5W LEDs	W3 3000K White W45 4500K Neutral White	10 10° Wall Washer A Asymmetric Beam	B Black	F Flush Mount

CONSTRUCTION

- Die cast and extruded aluminum housing, double powder coat
- All exterior parts steel are stainless steel
- Tempered safety glass, flush silicon gasket
- Polypropylene recess housing
- Stainless steel cable gland

SIZE AND MOUNTING

- Overall - 25.5" long x 3.3" wide x 3.9" deep
- Housing - 25" long x 3.15" wide x 3.75" deep

LEDS

- 6 x 2.5W high performance LED in 3000K or 4500K

COMPLIANCE

- ETL Listed, IP67, IK10, ENEC, LM79 Tested, LM70 (50,000 hours)

OPTIONS

- Cast Resin Connection Box

ELECTRICAL

- Integral Power Driver
- Power Consumption: 15W
- External dimming driver available. Consult factory for details

FINISHES

- Polyester powder coat in Black

WARRANTY

- 3-year limited warranty.
- Complete warranty terms available at ElectrixIllumination.com