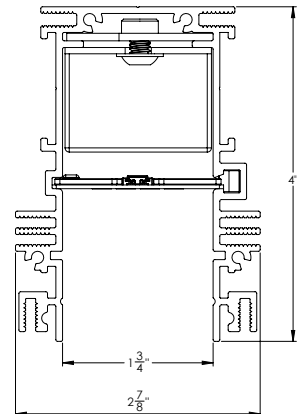


## MagneConnect Recessed Power Track Housing

MagneConnect is a revolutionary all-in-one slot power delivery system. Express your creativity by dynamically repositioning every light fixture to personalize your lighting design.

### FEATURES

- Integral and accessible driver and through wiring
- Fits standard 2"x4" or 2"x6" construction
- Accommodates 1/2" or 5/8" gypsum board
- Choice of mud-in flange or overlap trims and cover profiles for custom appearances
- Two-channel design for multiple zone controls
- Standard and customizable lengths available
- 6 or 12.5 Watt per linear foot configurations standard
- Flexible installation options include corners, T's, crosses, and wall to ceiling transitions
- Efficient compatible lighting modules include: monopoints, luminous bands, wall washers, adjustable spot lights, and pendants
- Compatible 24V Accessories include occupancy sensors, HVAC controls, USB chargers, nanny cams, and Bluetooth speakers



MC-RPT

## CONSTRUCTION

- Extruded aluminum recessed slot housing
- 1-3/4" wide opening x 4" high nominal recess depth
- Suitable for wall, ceiling, and transition applications
- Mud flange included in all recessed, standard packages, and screws onto main extrusion
- Overlap trim field trimmable to minimize joint
- Backer flange adjustable for 1/2" or 5/8" gypsum board
- Recessed housing comes in 16' powered cases, 4' powered sections, 4' unpowered sections, 4' sectionalized sections, 2'x2' powered corners, and angle transition kits
- T's, Crosses and custom corners available— Consult Factory

## ELECTRICAL

- 120 - 277V auto-sense A/C input
- 2-Channel, 24V, class 2 power delivery track
- System includes 12-gauge feed through wiring
- Termination units available

## OPTIONS

- Emergency Driver & Emergency Circuit options — Consult Factory
- Optional HVAC modules available

## COMPLIANCE

- ETL listed for dry and damp locations pending
- CSA compliant

## PERFORMANCE

- Standard system configurations available at 6 W/ft and 12 W/ft
- CA Title 24 configurations available – consult factory
- Two-channel design for multiple zone controls

## LENGTHS AND MOUNTING

- 48" & 96" straight fixed length, all corners appropriate for wall or ceiling use
- Sectionalized track available for customizable lengths
- Unpowered extension units available

## LEDS

- Efficient LED lighting fixtures attach and powered via magnetic power delivery system (fixtures specified and sold separately)

## FINISHES

- Housing is black anodized
- Consult factory for white recessed track housing
- Mud Flange is black vinyl
- Choice of Overlap Trim available in white or black
- Consult factory for metallic trims

## WARRANTY

- 3-year limited warranty.
- Complete warranty terms available at [ElectrixIllumination.com](http://ElectrixIllumination.com)

## ORDERING GUIDE

MC-RPT			
PRODUCT	POWER LEVEL	TRACK LENGTH	CONTROL
<b>MAGNECONNECT</b> Recessed Power Track Housing	<b>6</b> 6W/linear ft	Please specify run length	<b>D</b> 1% 0 - 10V
	<b>12</b> 12W/linear ft		<b>C</b> Casambi Wireless <sup>1</sup>
			<sup>1</sup> Consult Factory

### RUN LAYOUT & WATTAGE

Determine Run Layout and Quantity of Each Track Type Required.

Select Power Required for System **12 W/ft | 6 W/ft**

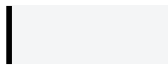
Control Required for System **1% 0-10V | Casambi Wireless**

### POWER TRACK HOUSING

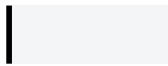
#### PRODUCT



**16 ft** Case of Power Track



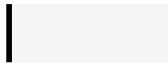
**4 ft** Section of Power Track



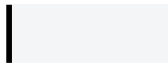
**4 ft** Sectionalized Kit of Power Track

### CORNERS & TRANSITIONS

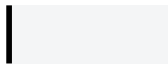
#### PRODUCT



90° Angle Transition Kit



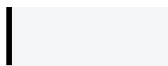
Inside Corner



Outside Corner

### DECORATIVE DETAILS

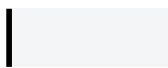
#### PRODUCT



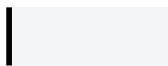
Overlap Flange

Select Color: **Black | White**

#### PRODUCT



Cover Plate



Termination Plate

MagneConnect

# LUMINAIRES ORDERING GUIDE

MagneConnect

## CYLINDER TRACK HEAD QTY:

<b>MC-CTH</b>			
---------------	--	--	--

PRODUCT	LED COLOR	DISTRIBUTION	TRIM RINGS	OPTIONS
<b>MC-CTH</b> MagneConnect Cylinder Track Head	<b>27</b> 2700K	<b>18</b> 18°	<b>GG</b> Gunmetal Grey	<b>SC</b> Siesmic Clip
	<b>30</b> 3000K	<b>28</b> 28°	<b>SN</b> Satin Nickel	
	<b>35</b> 3500K	<b>47</b> 47°	<b>PC</b> Polished Chrome	

## DESCEND PENDANT QTY:

<b>MC-DC3</b>			
---------------	--	--	--

PRODUCT	LED COLOR	DISTRIBUTION	TRIM RINGS	OPTIONS
<b>MC-DC3</b> MagneConnect Descend Pendant	<b>27</b> 2700K	<b>18</b> 18°	<b>GG</b> Gunmetal Grey	<b>SC</b> Siesmic Clip
	<b>30</b> 3000K	<b>28</b> 28°	<b>SN</b> Satin Nickel	
	<b>35</b> 3500K	<b>47</b> 47°	<b>PC</b> Polished Chrome	

## LINE LUMINAIRE QTY:

<b>MC-L</b>		
-------------	--	--

PRODUCT	DISTRIBUTION	LED COLOR	OPTIONS
<b>MC-L</b> MagneConnect Line Symmetric Luminaire	<b>12</b> 12" actual	<b>27</b> 2700K	<b>SC</b> Siesmic Clip
	<b>24</b> 24" actual	<b>30</b> 3000K	
		<b>35</b> 3500K	

## POINT QTY:

<b>MC-P</b>	
-------------	--

PRODUCT	LED COLOR	DISTRIBUTION
<b>MC-P</b> MagneConnect Monopoint Accent Luminaire	<b>27</b> 2700K	<b>13</b> 13°
	<b>30</b> 3000K	<b>16</b> 16°
	<b>35</b> 3500K	<b>29</b> 29°
		<b>48</b> 48°
		<b>61</b> 61°

# TRACK COMPONENTS

## STRAIGHT POWER TRACK

### 16' CASE OF STRAIGHT POWER TRACK

- Sold in 16' case of two 8' powered sections
- Wall or Ceiling use
- High Power; 96 Watts, 1 Amp - 12 W/ft
- Low Power; 50 Watts, .5 Amp - 6 W/ft
- 12GA through wired
- Includes link brackets, mounting brackets, feed through wiring, backer flange, PVC mud flange, driver, and end cap with attachment for overlap flange

### ORDERING CODE

- MC-RPT-12-16 12 W/ft
- MC-RPT-6-16 6 W/ft

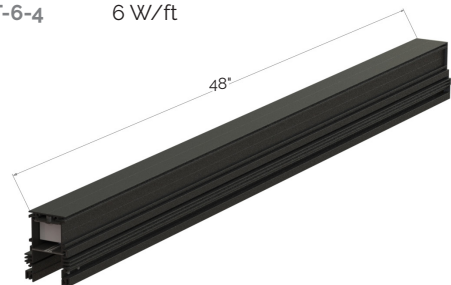


### 4' STRAIGHT POWER TRACK

- Wall or Ceiling use
- High Power; 50 Watts, .5 Amp - 12 W/ft
- Low Power; 25 Watts, .25 Amp - 6 W/ft
- 12GA through wired
- Includes link brackets, mounting brackets, feed through wiring, backer flange, PVC mud flange, and driver, and one end cap with attachment for optional overlap flange

### ORDERING CODE

- MC-RPT-12-4 12 W/ft
- MC-RPT-6-4 6 W/ft



### 2' STRAIGHT POWER TRACK

- Wall or Ceiling use
- 25 Watts, .25 Amp - 6W/ft
- 12GA through wired
- Includes link brackets, mounting brackets, feed through wiring, backer flange, PVC mud flange, driver, and one end cap with attachment for optional overlap flange.

### ORDERING CODE

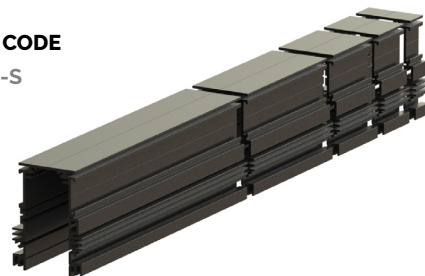
- MC-RPT-12-2 12 W/ft

### 2' SECTIONALIZED STRAIGHT POWER TRACK

- Wall or Ceiling use
- Pre-cut sections 1' - 6" - 3" - 2" - 1"
- Includes link brackets, mounting brackets, feed through wiring, backer flange, PVC mud flange, driver, and one end cap with attachment for optional overlap flange

### ORDERING CODE

- MC-RPT-24-S

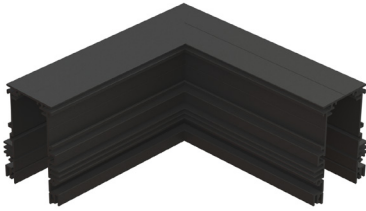


MC-RPT

## TRACK COMPONENTS

### STANDARD 90° CORNER TRACK

- Includes link brackets, mounting brackets, feed through wiring, backer flange, PVC mud flange, and driver
- 12GA through wired
- T's, crosses, and custom corners are available – Consult Factory



#### 90° ANGLE TRANSITION KIT 24" x 24" fixed length

- Transition of direction within a wall or ceiling plane
- Universally designed to be assembled for any 90° transition on a single plane
- High Power; 50 Watts, .5 Amp - 12 W/ft
- Low Power; 25 Watts, .25 Amp - 6 W/ft

#### ORDERING CODE

**MC-RPT-ATK-12**  
12 W/ft Angle Transition Kit

**MC-RPT-ATK-6**  
6 W/ft Angle Transition Kit



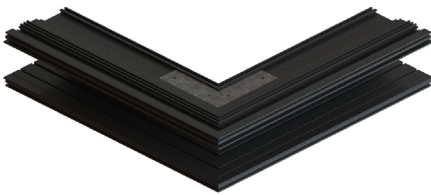
#### 90° INSIDE CORNER 24" x 24" fixed length

- Transitions from Ceiling-Wall or from Wall-Wall on an inside corner
- High Power; 50 Watts, .5 Amp - 12 W/ft
- Low Power; 25 Watts, .25 Amp - 6 W/ft

#### ORDERING CODE

**MC-RPT-PC-IC-12**  
12 W/ft 90° Inside Corner

**MC-RPT-PC-IC-6**  
6 W/ft 90° Inside Corner



#### 90° OUTSIDE CORNER 24" x 24" fixed length

- Transitions from Wall-Wall on an outside corner
- High Power; 50 Watts, .5 Amp - 12 W/ft
- Low Power; 25 Watts, .25 Amp - 6 W/ft

#### ORDERING CODE

**MC-RPT-PC-OC-12**  
12 W/ft 90° Outside Corner

**MC-RPT-PC-OC-6**  
6 W/ft 90° Outside Corner

**MagneConnect is a flexible and customizable system that can cater to custom layouts. If you can dream it, we can build it**

## CONTROL INTEGRATION & OPTIONS

### DIMMABLE

Multiple control protocols, DALI, DMX, 0-10V, BMS, Bluetooth BLE, EnOcean

### BAC-NET COMPATIBLE

### DAYLIGHT SENSOR MODULE

24v, magnetic power couple & attachment

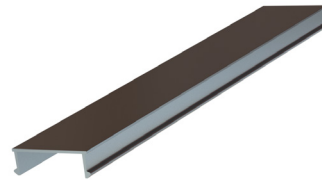
### OCCUPANCY/VACANCY SENSOR MODULE

24v, magnetic power couple & attachment

### AVAILABLE WIRELESS CONTROL OPTIONS

## COVER PLATES

- Decorative aluminum cover plates available
- Field cut for custom layouts
- Clear anodized finish standard — Consult factory for custom options



## TRACK ACCESSORIES

### OVERLAP FLANGE TRIM

- Available in white or black
- Consult factory for metallic and custom finishes

### TERMINATION PLATE

- Optional kit for use of overlap flange
- Includes end cap, attachment for overlap flange and hardware
- Each piece of track comes with one unit, for layouts consisting of singular sections of track, order second termination separately

### HVAC/DIFFUSER RETURN KIT

### ORDERING CODE

MC-RPT-OF-B    Overlap Flange Black  
MC-RPT-OF-W    Overlap Flange White

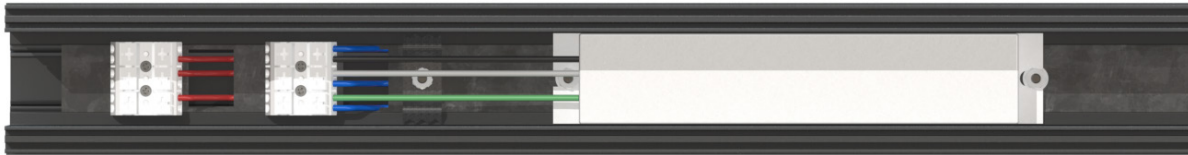
MC-RPT-TP

MC-RPT-UT-HVAC

## WIRING

### TWO CHANNEL CONFIGURATION

- Channel 1 input A/C field wired into first push-in connector terminal
- Channel 2 input A/C field wired into second push-in connector terminal
- Connector terminals factory wired to driver
- Driver factory wired to power track
- Power track sections factory wired together with MagneConnect jumper cables





## COMPATIBLE FIXTURES

Magnetic LED Luminaires Specified Separately

• Quick ship options available — Consult Factory



### POINT

Monopoint Accent LED Luminaire

MC-P

- Even reveal when fixtures placed adjacent to one another
- 160 lumens; 1.6W; 100 lm/W
- Distribution Options: 13°, 16°, 29°, 48°, or 61°



### DESCEND

Suspended Pendant LED Luminaire

MC-DC3

- Optional seismic clip available to prevent liability due to vibrations
- 2 channel switch for zone control
- Choice of trim options for personalized appearance
- 1200 lumens; 15 W; 80 lm/W
- Distribution Options: 18°, 28°, or 47°



### LINE

Linear Symmetric LED Luminaire

MC-L

- Available in 12" or 24"
- Removable end caps for continuous runs
- Optional seismic clip available to prevent liability due to vibrations
- 2 channel switch for zone control
- 800 lm/ft; 10 W/ft; 80 lm/W



### CYLINDER

Efficient Cylinder Track Head LED Luminaire

MC-CTH

- Optional seismic clip available to prevent liability due to vibrations
- 2 channel switch for zone control
- Choice of trim options for personalized appearance
- 1200 lumens; 15 W; 80 lm/W
- Distribution Options: 18°, 28°, or 47°

## COMPATIBLE ACCESSORIES

24V Constant Voltage Magnetic Accessories Specified Separately

### SECURITY CAMERA MODULE

24v, Magnetic Couple

### SPEAKER MODULE

24v, Magnetic Couple

### USB MODULE

24V USB Charger Magnetic Couple