

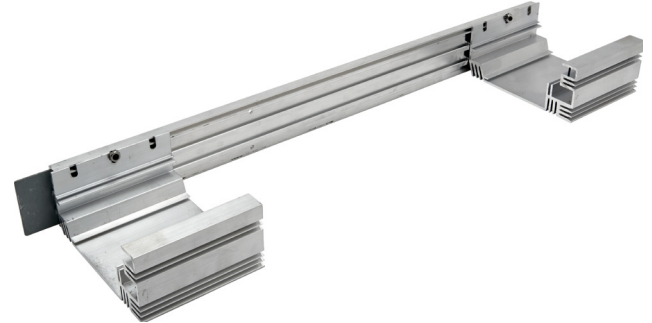
DATE \_\_\_\_\_ PROJECT \_\_\_\_\_ TYPE \_\_\_\_\_ QUANTITY \_\_\_\_\_

# LumiEdge® Prefabricated 7" Square Edge Cove Framing

U.S. PAT. NO 9,062,840 B2

## FEATURES

- Install alignment rail and clip on brackets to create a perfect cove frame
- Framing field finished with wall board for exact match to wall surfaces.
- Factory precise forms make installation more cost effective than field built coves
- 3" high x 7" wide profile
- Field trimmable for exact wall fit
- Inside and outside corner kits available
- Easily create curved coves by roll bending the alignment rail
- Satin anodized finish



## ORDERING

|                 |                              |                              |                             |
|-----------------|------------------------------|------------------------------|-----------------------------|
| <b>LLSR-FR7</b> | <b>40 feet</b><br>per carton | <b>16 feet</b><br>per carton | <b>8 feet</b><br>per carton |
|-----------------|------------------------------|------------------------------|-----------------------------|

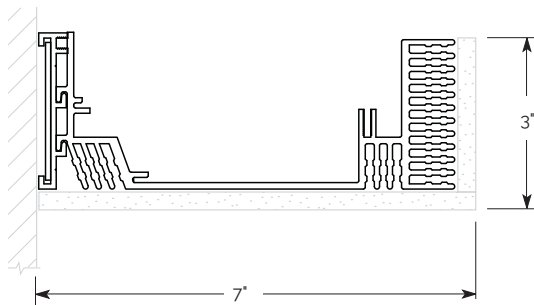
## ADDITIONAL COMPONENTS

SPECIFY QUANTITIES

| PRODUCT  | COVE LENGTH   |
|--|---|
| <b>LLSR-FR7</b><br>Square Edge<br>Cove Framing | Please specify the carton quantities.<br>Prefabricated knife edge cove system is packaged in 40, 16 or 8 feet per carton. |




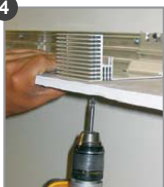


**LLSR-FR7-OC**  
Outside Corners

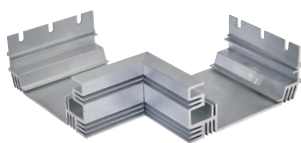
**LLSR-FR7-IC**  
Inside Corners



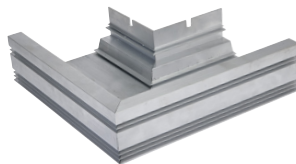
## INSTALLATION

PLEASE NOTE: not recommended for floating ceilings

-   
Mount wall extrusion using no. 8 screws
-   
Link next extrusion
-   
Attach support bracket
-   
Fasten bottom horizontal gypsum
-   
Fasten face vertical gypsum
-   
Compound and apply corner beads



Inside Corner:



Outside Corner:

**WARRANTY** 5 Year warranty visit [electrixillumination.com](http://electrixillumination.com) for details

