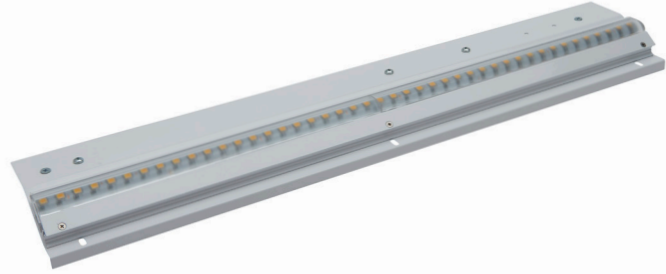


DATE _____ PROJECT _____ TYPE _____ QUANTITY _____

LumiLedge® High Performance Asymmetric LED Luminaire

FEATURES

- Constant current luminaire
- Integral driver
- Installs with K8-FR Framing system (sold separately)
- Feed through wiring option
- Continuous line of light with no shadows and smooth backwall illumination
- CRI 80+



FIXTURE COMPONENTS INCLUDE:

K8-i400F fixture, integral driver

CONSTRUCTION

- Extruded aluminum housing with aluminum end caps and 7/8" K.O.
- Injection molded acrylic optics.
- Semi-gloss white finish.

ELECTRICAL

- 120-277V AC integral driver.
- Continuous runs mounted end to end with no space between luminaires

ORDERING

PRODUCT	POWER	LENGTH	LED COLOR	OPTICS	CONTROL	OPTIONS
K8-i400F LumiLedge® High Performance Asymmetric LED Luminaire	07 7.6 W/ln ft	22 22¼" actual	827 2700K/80+CRI	A Narrow Asymmetric	00 Non-Dimming ZX 0-10V Dimming	0K Modular Prewired Harness 0E Emergency battery pack (consult factory) EK Modular Prewired Harness & Emergency battery pack (consult factory)
	10 10.5 W/ln ft	33 33¾" actual	830 3000K/80+CRI			
		44 44¼" actual	835 3500K/80+CRI			
		66 66¼" actual ²	840 4000K/80+CRI			
		88 88¼" actual ²				

² Consult factory for availability

³ Consult Factory for Availability

RATINGS & CERTIFICATION

- cETLus Listed
- Made in the USA
- Average rated LED life of 50,000 hours @ 70% lumen output

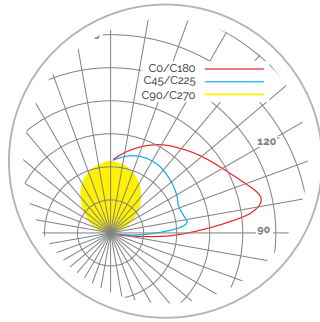


LUMEN OUTPUT

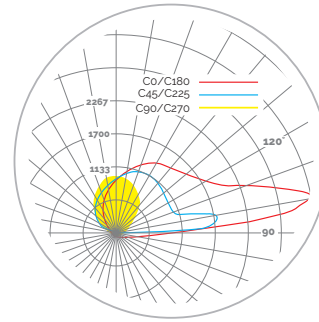
STANDARD (7.6W/ft)	770 Lm/ft	7.6 W/ft	101 Lm/w
HIGH (10.5W/ft)	1060 Lm/ft	10.5 W/ft	101 Lm/w

WARRANTY 5 Year warranty
visit electrixillumination.com for details

PHOTOMETRY



7.6W Narrow Asymmetric



10.5W Wide Asymmetric

IES data available on electrix website electrixillumination.com

DIMENSIONS

